

# Collage and Enamel on PMC+ A Step-by-Step Process

by

# Janet Harriman

[www.harrimanjewelry.com](http://www.harrimanjewelry.com)

harrimanjewelry@yahoo.com

# Getting Started – Step #1

- To create an enameled PMC+ collage pendant start by assembling dry fragments of PMC+ clay, textures, or pieces that have been pressed into a rubber mold. Arrange the fragments on a piece of Teflon into a collage design. You can work from a theme a story or a dream image.



## Step #2



Roll out a thin sheet of PMC+ two cards thick on another oiled Teflon sheet. Brushed the rolled sheet with water and attach the dry fragments to make your design. Dry the piece. I like a food dehydrator for drying because it is fast. It will dry in about ten minutes.

# Step #3

Carefully shape the sheet with the dry fragment using a coarse wide nail file working it into a round or oval pendant. Roll out a PMC+ snake on an oiled Teflon long enough to go around the outside edge of the shaped pendant. Attach the snake by brushing water on the outer most edge of the snake. Gently press the snake to the pendant with your finger or the brush. Dry the pendant.



# Step #4



File and true up the snake border with the wide nail file. Twist a piece of 18 gauge fine silver round wire into a bail for the top of the pendant. Place the wire bail on the rear top center of the pendant and cement the wire bail to the back of the pendant with a generous lump of PMC+. Dry the pendant thoroughly.

## Step #5: Firing

Fire the dried pendant flat on a kiln shelf at 1650 degrees for two hours.

- Unfired Clay →



- Fired Metal →



# Step #6

Cool the fired pendant and tumble it with the 1/2" stainless steel pins for 30 minutes in a tumbler. Dry the tumbled pendant and burnish it with the agate burnisher and embroidery needles.

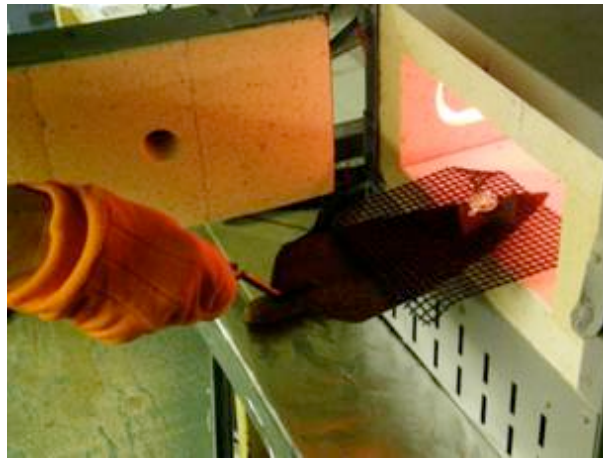


# Part II

## Enameling the PMC+ Collage Pendant

# Steps #7, #8, #9

- #7. Spit on the front and back of the silver pendant.
- #8. Place the silver pendant on an enameling stilt that is resting on top of an enameling rack. Using gloves, eye protection and an enameling fork or a trowel, lift the pendant on a firing rack into the hot 1450 degree kiln for 30 seconds. This quick firing will clean and eliminate grease. The silver pendant must be clean so the enamel can adhere to the silver.
- #9. Allow the pendant to cool completely. Handle the cleaned silver pendant by the outside edges only to avoid any hand grease on the pendant surfaces.



# Step #10



Set up 1/4 cup unwashed #2305 Nile Green 80 mesh Thompson lead-free enamel in an 80 mesh sifter on top of a clean piece of newspaper to contain enamel the pendant. Paint some klyr-fire, a holding agent, on the back side of the clean silver pendant using a clean brush. Sift a thin coat, about 20 gauge thick of the 2305 enamel on the back of the pendant while the klyr-fire is still wet. Dry the sifted piece on a stilt on top of the hot kiln.

# Step #11

Slowly turn over the dry counter enameled pendant. Place some washed 2305 Nile green transparent enamel in a clean dish or paint tray. Add some Klyr-fire to the washed enamel in the tray and wet pack the Nile green in a thin coat on the front of the silver pendant. You can leave some exposed areas of silver.

# Step #12



Place some 620 transparent lumps of enamel on a clean sheet of white paper. Use a separate sheet for each color of the lumps. I am using the Thompson lead-free 620 transparent lumps, #2520 aqua blue, #2325 gem green and a bit of #2530 water blue. Add dots of the 620 lump enamel colors with tweezers on top of the thin wet packed Nile green. Dry the pendant on the stilt on top of the hot kiln.

# Steps #13 & #14

- Place the dry pendant coated with the enamel on the stilt on an enameling rack and carefully place it in a hot 1450 degree to 1500 degree kiln using gloves and eye protection. Using a timer, wait for the kiln to reach 1450-1500 degrees then set the timer for 4 or 5 minutes. Remove the enameled pendant from the kiln when the time is up. The fired pendant will be very hot so use caution and protection. You may need to repeat this step. It takes at least two firings for the enamel colors to mature and look good.
- Completely air cool the fired enamel pendant. Place the enameled pendant in a tumbler with the stainless steel pins for 30 minutes. The pendant can also be buffed with zam compound.



# Example of Finished Enamel Piece after multiple firings



# Supplies Needed

- PMC+
- One inch 18 gauge fine silver round wire
- Teflon sheets
- Olive oil
- Roller
- Playing cards
- Wide nail file
- Distilled water
- Paint brushes, medium and fine point
- Kiln
- Thompson lead-free #2305 80 mesh 2 oz.
- Thompson lead-free 620 lumps 2 oz. of each #2520, #2325, #2530
- Enameling tools: stilt, rack, gloves , kiln viewing goggles, firing fork or trowel, 80 mesh sifter
- Klyr-fire
- Tweezers fine pointed
- Tumbler with steel pins
- Agate burnisher