

PMC and Ceramics

Noortje Meijerink

The Netherlands



Tech expo

PMC Conference 2008

Noortje Meijerink



Program

- Introduction
- PMC on Ceramic
 - Lump
 - Paste
 - Tips & Tricks
- PMC in a RAKU firing
 - Raku Tips & Tricks





Introduction

Noortje Meijerink

The Netherlands



Ceramist



PMC artist



Tech expo

PMC Conference 2008

Noortje Meijerink



PMC on Ceramic



'Speedy'

Porcelain, PMC3, 20 x 4 cm



Tech expo

PMC Conference 2008

Noortje Meijerink



PMC on Ceramic

Make your ceramic the way you are used to

- throwing on the wheel
 - hand forming
 - by rolling plates
- etc.



Tech expo

PMC Conference 2008

Noortje Meijerink



PMC on Ceramic

Glaze the ceramic
after bisque firing



PMC on Ceramic

Fire the glaze at the appropriate temperature



PMC on Ceramic - Lump

To determine the size of the silver on the ceramic

- Cut the design out of a piece of paper
- Lay it on the ceramic to see how it looks like



Tech expo

PMC Conference 2008

Noortje Meijerink



PMC on Ceramic - Lump

Use the paper template to cut
the form out of a sheet
PMC+ or PMC3, 1 or 2 cards thick



Place the PMC on the ceramic



PMC on glazed Ceramic - Lump



Paper design
used as a
template



Not only on
small pendants
but also on
larger objects



PMC on Ceramic - Lump

Make texture in the PMC, if wanted



After firing



PMC on Ceramic - Lump

Fire the PMC
always in place
on the ceramic

The best
temperature is
900°C/1650°F



Tech expo

PMC Conference 2008

Noortje Meijerink



PMC on Ceramic – PMC 3 Paste

- Add at least 4 layers
- Use a synthetic paintbrush or clay shaper
- Polish the layers to a high shine
- Fire at 900°C/1650°F



PMC3 paste on glazed ceramic



Tech expo

PMC Conference 2008

Noortje Meijerink



Tips & Tricks

- PMC falls of
- Shadow lines
- Metal shine
- PMC melting



PMC falls of

PMC on a vertical glazed ceramic object can fall off when it is dry

Apply PMC3 Paste to the back of dry PMC and 'glue' it on the glazed surface



Tech expo

PMC Conference 2008

Noortje Meijerink



Shadow lines

Do not apply the PMC paste all over the backside

Leave a clear space of 1mm from the edges of the PMC

If not, a **shadow line** will appear



Metal shine

Polish the PMC to a high shine before firing

Polishing after firing gives a **metal shine** on the ceramic

This can be beautiful, but not always wanted



Melting point

Never fire at higher temperatures than 930°C/1706°F

If you do
PMC will **melt**



PMC in a Raku firing



'3 Wings' - porcelain, PMC3, 20 x 7 cm



Tech expo

PMC Conference 2008

Noortje Meijerink



PMC in a Raku firing

EQUIPMENT

- Raku kiln
- Torch
- Propane gas
- Pyrometer



Tech expo

PMC Conference 2008

Noortje Meijerink



PMC in a Raku firing

EQUIPMENT

- Heat resistant gloves
- A pair of tongs
- Reduction vessel
- Sawdust
- Sanding sponges, sand and water



PMC in a Raku firing

Bisque fire at 1080°C/
1780°F



Form your PMC
as usual



Apply the Raku glaze



Place the PMC back



PMC in a Raku firing

Set the ceramic with PMC on it in the kiln
and
Fire up to 900°C/1650°F



Tech expo
PMC Conference 2008

Noortje Meijerink



PMC in a Raku firing

Open the kiln at 900°C/1650°F
take the pot out with tongs
and put it
red hot in the reduction vessel



Tech expo
PMC Conference 2008

Noortje Meijerink



PMC in a Raku firing



Wait until a good fire develops

then close the lid of the reduction vessel tight



Tech expo

PMC Conference 2008

Noortje Meijerink



PMC in a Raku firing



Wait at least
10 minutes before
opening the
reduction vessel
Start polishing with
sand and water
using sanding
sponges
'fine' to 'microfine'



Porcelain, PMC 3, 16 x 7 cm



Tech expo

PMC Conference 2008

Noortje Meijerink

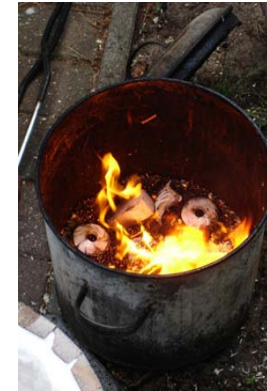


Tips & Tricks

- Kiln props



- Fire the reduction vessel



- Pyrometer



- Loose PMC



Raku Tips & Tricks



Use **kiln props** for small objects like pendants

Pendants on props are easier to grab with tongs



Raku Tips & Tricks

Use
the **kiln props**
to generate
enough fire

Pendants or beads
are often too small
to ignite the fire

Add larger objects
like kiln props
to start a good fire



Raku Tips & Tricks



Place the **sensor**
of the pyrometer as close as possible to the
PMC

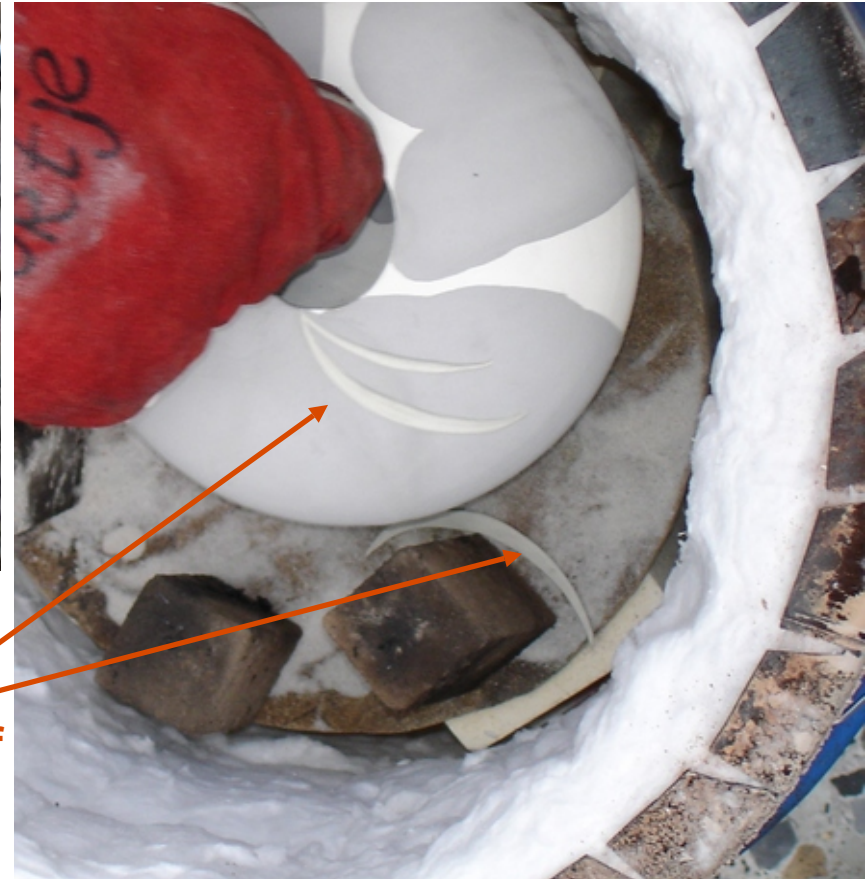
to be sure the **temperature** does not get
over 930°C/1706°F



Raku Tips & Tricks



PMC lays loose on the glaze

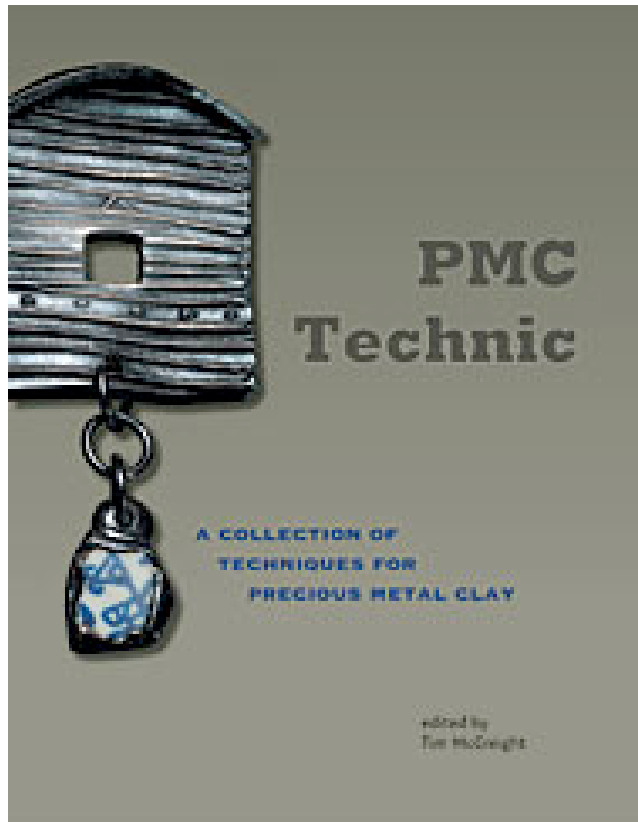


Take care! The **PMC can easily fall off**



DO YOU WANT TO NOW MORE?

READ



PMC Technic
edited Tim McCreight



Zilverklei
Noortje Meijerink



Tech expo
PMC Conference 2008

Noortje Meijerink

